



Hydro-seeding is a great, cost-effective alternative to sod and produces high quality sod-like results at a fraction of the price of sod. Hydro-seeding is a process of combining seed, mulch, fiber, tackifiers and gel with water to form a slurry mixture. This mixture is pressure applied to the soil to create the ideal environment for seed germination and turf development. Grass may appear in as little as 7 days and could be well established in 3-4 weeks. Consider hydro-seeding as a cost savings alternative to sod on your next commercial or residential project. You'll be glad you did.



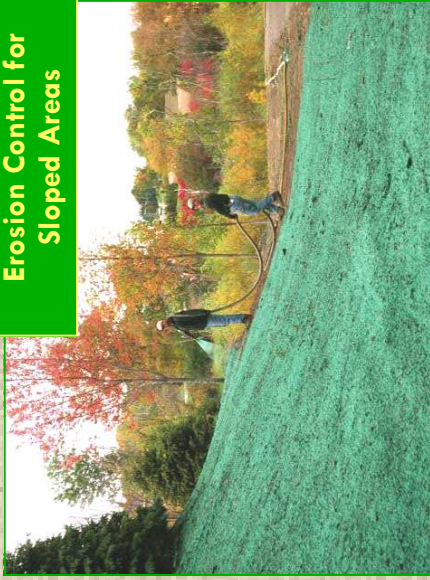
Wide Area Application



Precision Application



ROW's



Erosion Control for Sloped Areas



Commercial Properties



Golf Courses

Why Hydro-seed?

⇨ **Significant Cost Savings**

⇨ **Rapid and Uniform Growth**

⇨ **Weed Control**

⇨ **Soil Moisture Retention**

⇨ **Quality Enzyme and Bacteria Growth**

⇨ **Uniform Application**

⇨ **Ideal for Sloped or Inaccessible Areas**

⇨ **Erosion Control**

⇨ **Improved Seed Bonding**

⇨ **Fertilizer Optional**

⇨ **High Capacity for Large Areas**

⇨ **Ideal for Out Lots, Common Areas or ROW's**

⇨ **Used Extensively by Golf Courses**

⇨ **Safe and Non-Toxic Green Finish**

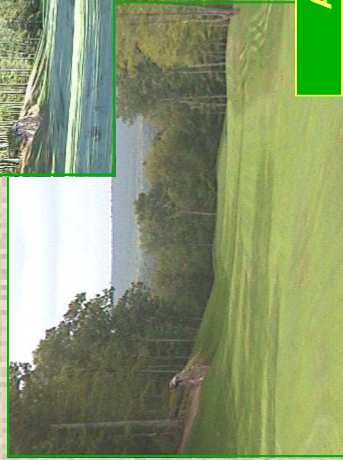
Only at TimberPine

515-834-2712

Before



After

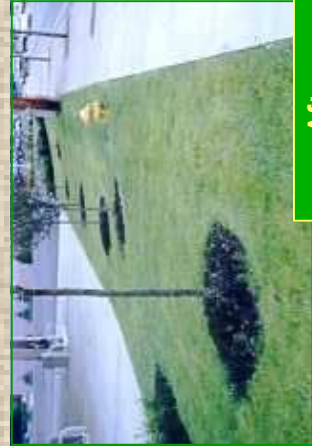


The Quality you want,
the Quality you Expect!

Before



After



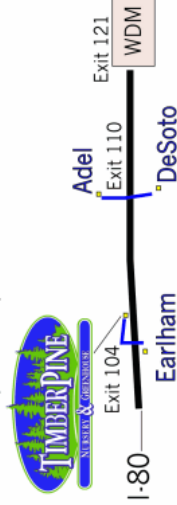
Hydro-seeding



**PREMIUM QUALITY
AT A FRACTION OF THE PRICE**



Conveniently located just off Interstate 80 at Exit 104



Just 15 Minutes West of West Des Moines

TIMBERPINE, INC.

18863 Jewell Dr
Earlham, IA 50072

Phone: 515-834-2712
Fax: 515-834-2778
sales@timberpine.com
www.timberpine.com